

New RAPIDMATCH™ Software Quick Reference Guide



1. What's New

The *RapidMatch* software has been improved to include enhanced features and a streamlined workflow, making the work of searching for the right match easier and more efficient. New features:

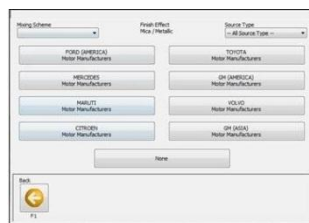
- **Car Maker Predictor** to simplify the search
- **Wake-Up on Spectro docking:** No more click to start searching
- One unique Workflow for both Code and No-Code Search.
- **Texture** information to indicate appearance attributes
- **Car List** with visual representation to recover previous reading

2. As Simple as 1,2 and 3

Typical *RapidMatch* software workflow:



Dock *RapidMatch* X-5 device in the Cradle



Select the Car Maker

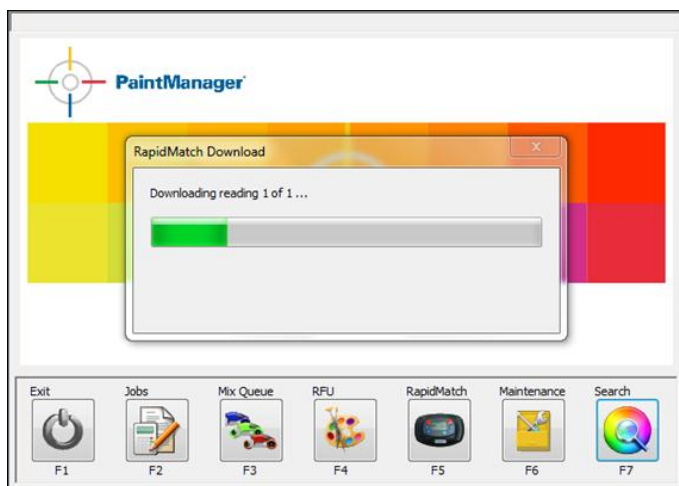


Insert the Color Code for optimum results



Select the best Match using **Match Rating** and **Texture**

2.a Dock the device in the cradle



Clicking on buttons is no longer required to start the work: it is enough to dock the spectrophotometer in its cradle and the software will recognize that a car reading has been taken and data are available to be processed.

The software will automatically download the reading from the device, initiating the search. If multiple vehicle readings have been taken they will be all saved in the readings list automatically. Refer below to the Multiple Reading section.

If after docking the spectrophotometer the automatic download will not start in seconds, check if it has been activated under options.

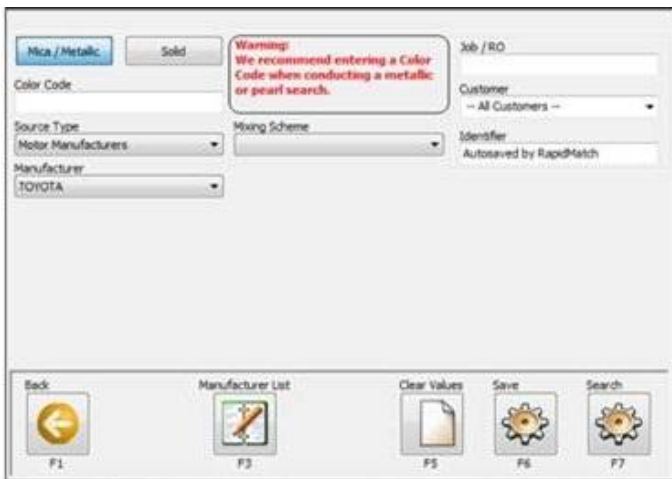
2.b Select the Car Maker from the Predictor



After the spectrophotometer has been docked and the software started to elaborate the information downloaded, a **Car Maker Predictor** will be presented. PAINTMANAGER® software will process the information and present the most likely eight Vehicle Manufacturers. To improve the results, **click** on the **Maker name** to save the information.

If the correct Car Maker is not available or to bypass this feature, **click** on **None** to proceed to the next step. It will be possible to change or add the manufacturer on the following screen.

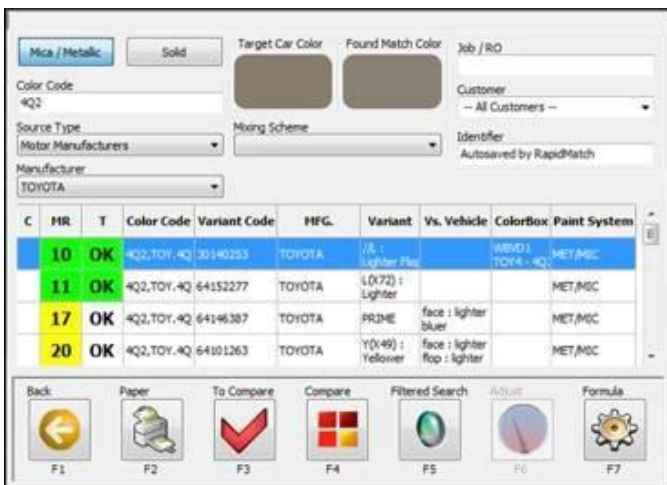
2.c Insert the Color Code for optimum results



If a solid color was identified by the system, this screen will be the first displayed after the reading was downloaded. For mica/metallic colors, the vehicle manufacturer selected from the previous screen will transfer automatically. Here it can also be changed or added.

The key information required in this screen is the Color Code, (OEM or Brand Code). Providing a Color Code will enable better and more precise searches; moreover it will enable the traffic lights system in the result screen. Type a valid **Color Code** and press **Search** to proceed. Additional information can be added and modified on this screen if required. Solid-Metallic toggle can also be changed.

2.d Select the Match using Match Rating and Texture



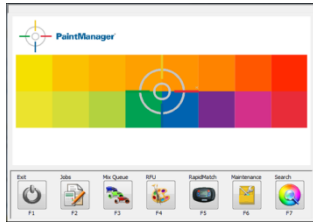
The search result screen will display the list of most probable matches identified, ranked by Match Rating (MR): If a valid Color Code has been provided, the Green-Yellow **Traffic Light** will be activated helping to evaluate the results of the matches retrieved. If no code provided, the MR and Texture will not show the colored traffic light.

Texture
OK = OK F = Finer C = Coarser

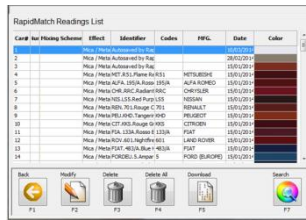
is not activated for Texture Solid colors

Different information including a new Color Code can be added to run a different search, by pressing **Enter**. To display the formula for the match, **scroll** to the **Match Lines** desired, and press the **Formula** button. **Filtered Search, Formula Adjust** and **Formula Compare** are also available from this screen.

3. The Car List: Working with multiple Readings and previous Spectrophotometer jobs

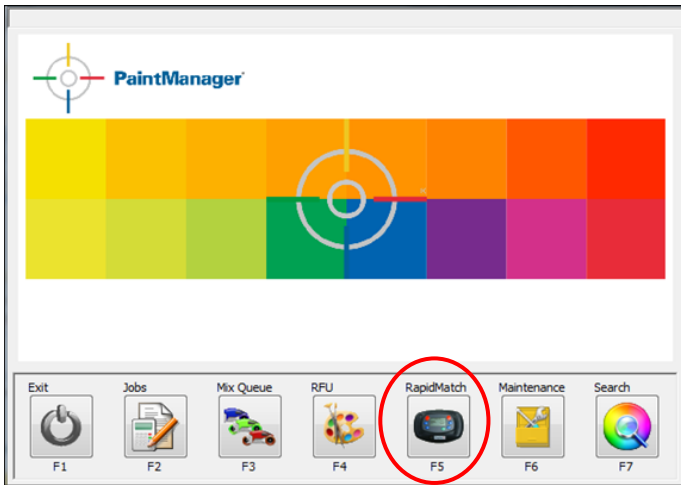


Main Screen with RapidMatch button



Car List Screen for saved spectro jobs

3.a Main Screen: Docking the device on the Cradle



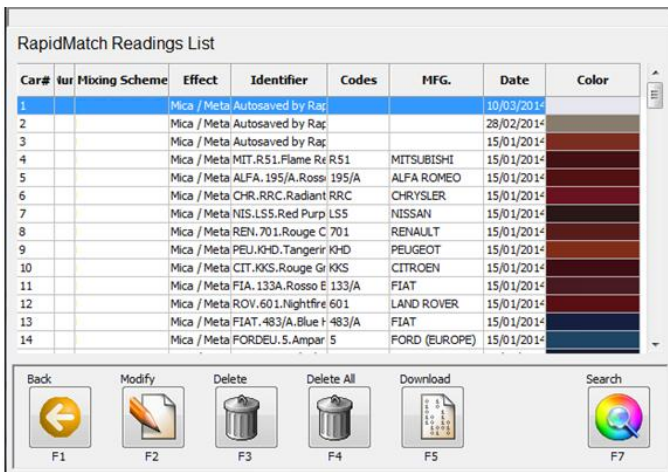
Recognizing the importance and frequency of use for the RapidMatch software retrieval process, the access has been made available from the system Main screen.

Click the **RapidMatch** button to display the Car List Screen.

In the Main and Car List screens, the automatic download functionality has been activated to start processing readings as soon as the spectrophotometer is docked into the cradle.

It is possible to enable/disable this functionality; go to the option menu.

3.b The car list screen



Multiple Reading will be automatically saved in the list when the system is docked, with the tagline **AutoSaved by RapidMatch**, allowing each Reading to be processed separately.

The RapidMatch Readings list screen also holds all the Spectro Jobs previously created.

To run a search for an automatically saved reading or a previous reading, simply scroll to the desired **reading line** and press **Search**.

From here, the system will start operating as for a single reading and, if the mica/metallic color is identified, before showing the Color Code search screen, the car manufacturer predictor screen will be presented.

4. Adjust Screens

4.a Adjust Result Screen

Code	Descr.	Original	Adjusted	Diffe...
Color Code:		4Q2_TOY.4Q2		
Variant Code:		64137459		
Revision Date:		01/03/2010	09/04/2014	
Variant:		F(X67) Finer	F(X67) ADJUSTED FORMULA	
Mixing Scheme:				
402	TRACE WHITE	12.5	26.3	+13.8
407	JET BLACK	80.7	67.1	-13.6
432	TRANSPARENT RED	50.4	38.9	-11.5
440	TRACE RED OXIDE	17.6	15.6	-2.0
460	YELLOW PEARL	191.6	364.8	+173.2
472	FINE LENT. METALLIC	473.9	351.2	-122.7
476	COARSE LENT. METAL...	146.2	109.0	-37.2
491	MATTING BASE	42.9	42.9	0.0

Main Menu	Back	Original	Adjusted
F1	F2	F4	F6

From the result screen, there will be the option to execute a color adjust, by **pressing** on the **Adjust** button.

The Color correction will be automatically performed by the system and the Original-Adjusted formula compare screen will be presented.

Click on **Original** or **Adjusted** buttons to display the corresponding formula.

4.b Adjusted Formula Screen

Manufacturer	TOYOTA	Description	BEIGE
OEM Code	4Q2_TOY.4Q2	Usage	Trim_Body
Brand Code	64137459	Finish Effect	Mica Year 2000

Formula Type	RapidMatch Adjusted	Date	
Mixing Scheme			
Model	AVALON,SEQUOIA,SIENNA	Surface Effect	Gloss
Price Code		Price	n/a

Code	Descr.	g [Inc]	g [Cum]	Diff. V Orig.
472	FINE LENT. METALLIC	352.5	352.5	-121.4
460	YELLOW PEARL	366.2	718.7	+174.6
476	COARSE LENT. META...	109.4	828.1	-36.8
407	JET BLACK	67.4	895.5	-13.3
432	TRANSPARENT RED	39.1	934.6	-11.3
491	MATTING BASE	43.1	977.7	+0.2
440	TRACE RED OXIDE	15.6	993.3	-2.0
402	TRACE WHITE	26.4	1019.7	+13.9

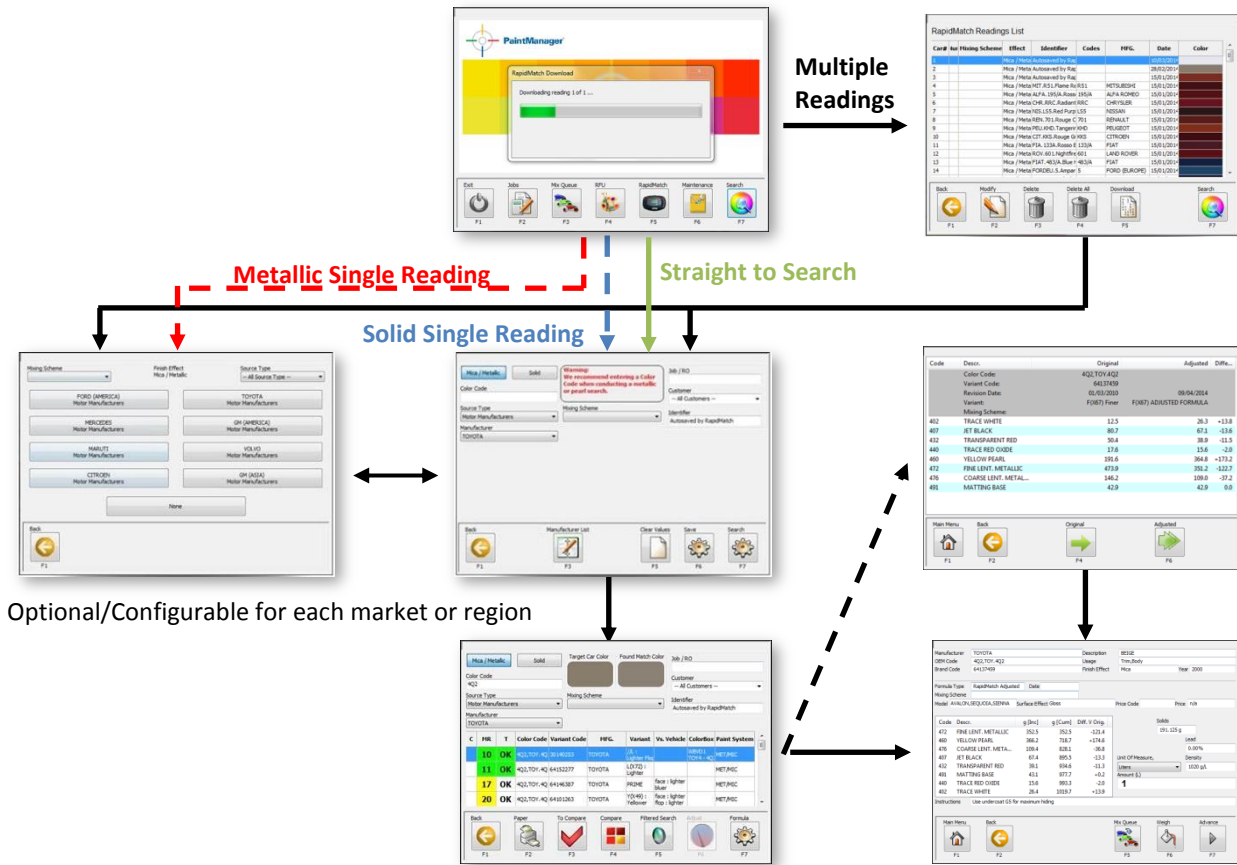
Solids	191.125 g
Lead	0.00%
Unit Of Measure,	Density
Liters	1020 g/L
Amount (L)	1

Instructions Use undercoat G5 for maximum hiding

Main Menu	Back	Mix Queue	Weigh	Advance
F1	F2	F5	F6	F7

If the **Adjusted formula** screen is selected, additional information, such as match type and tinters difference from the original will be presented.

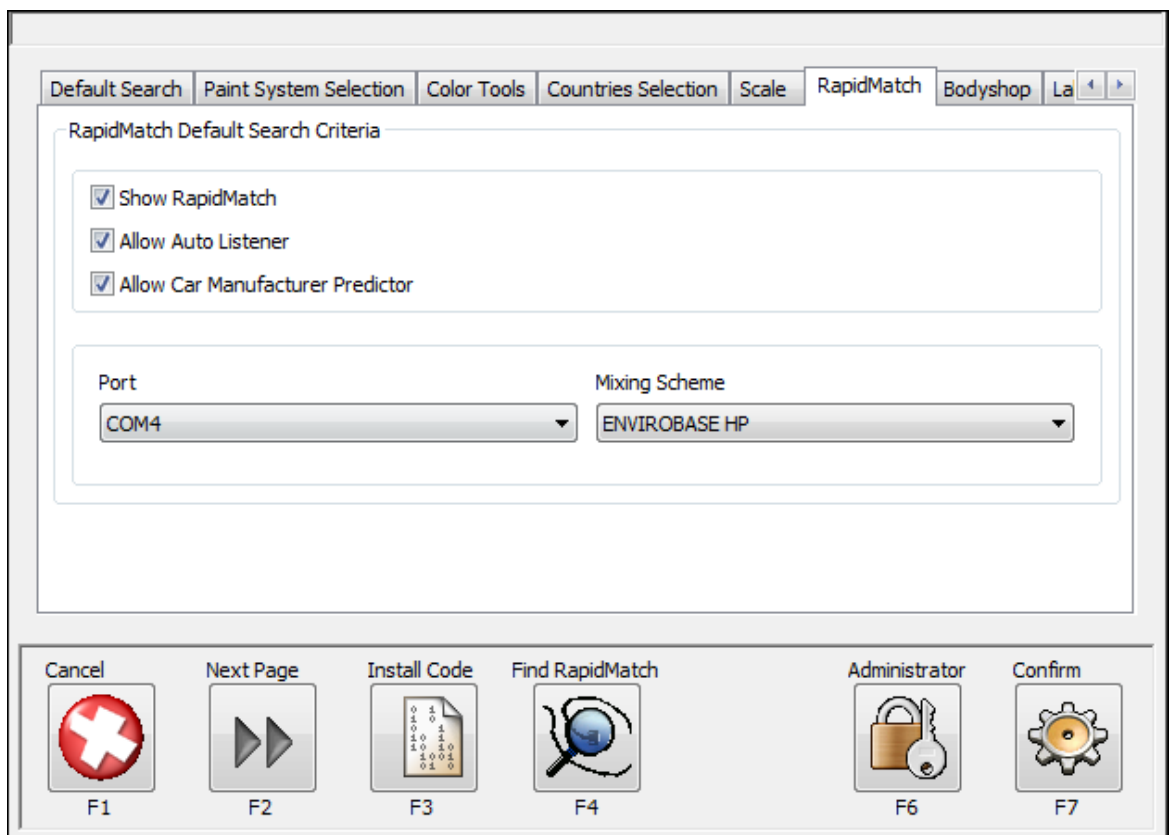
5. The complete workflow



Optional/Configurable for each market or region

6. Setting from the option menu

- Options for setting up the *RapidMatch X-5* spectrophotometer available under **Maintenance** and **Options** Screens.
- Select the **RapidMatch** Tab: if it is not available, the help desk has to be contacted to obtain a proper Install Code.
- **Set Show RapidMatch** to work with the spectrophotometer in *PaintManager* Software.
- **Click on Find RapidMatch** to have the *PaintManager* software find the Spectrophotometer and assign the right port.
- **Select the Mixing Scheme** that is used the most and has to become the default for the *RapidMatch* software workflow.
- **Set Allow Auto Listener**: to enable the device startup on the main menu when the Spectrophotometer is docked.
- **Set Allow Car Maker Predictor**: to enable the *RapidMatch X5* device startup on the main menu when the Spectrophotometer is docked.



The PPG logo, Bulls Eye Logo, *Envirobase* and *PaintManager* are registered trademarks of PPG Industries Ohio, Inc. *Bringing Innovation to the Surface* and *RapidMatch* are trademarks of PPG Industries Ohio, Inc. © 2014 PPG Industries, all rights reserved.

Third-party trademarks referenced within this guide are the property of their respective owners.